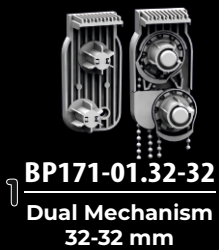
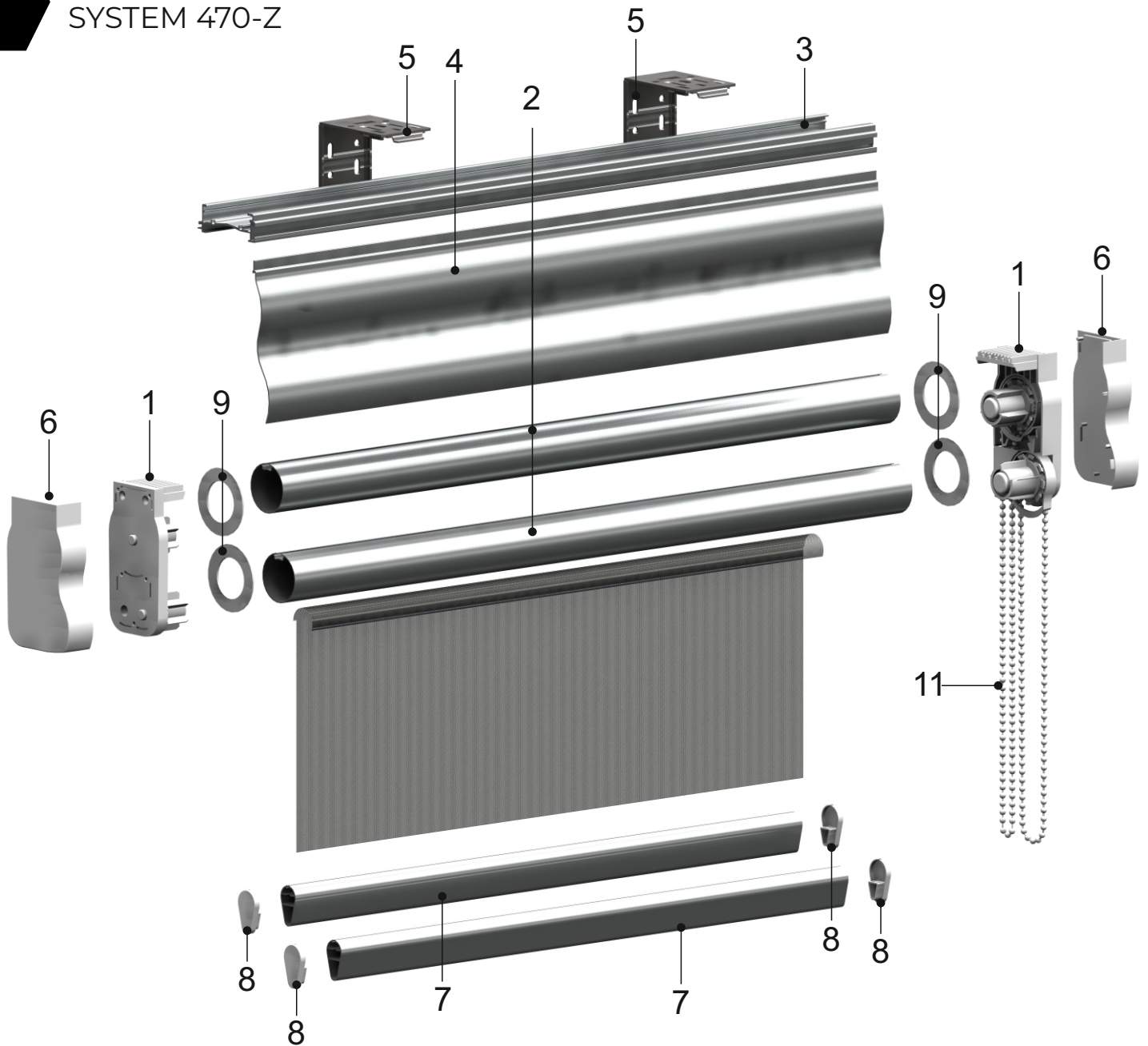
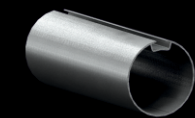


DOUBLE SYSTEMS

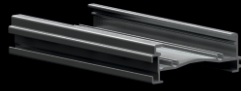
SYSTEM 470-Z



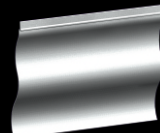
1 **BP171-01.32-32**
Dual Mechanism
32-32 mm



2 **BP041-03**
Aluminium
Tube 32 mm



3 **BP076-04**
Aluminium
Headrail
47 mm



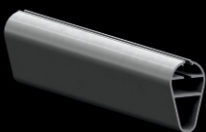
4 **BP190**
Alu. Facia for
Headrail



5 **BP389**
Wall Bracket
with Spring



6 **BP191**
End Cap for
47 mm Profile (L/R)



7 **BP535**
Aluminium
Bottom Rail



8 **BP534**
End cap for
Bottom Rail



9 **BP528**
Fabric Guide
50x30,5 mm



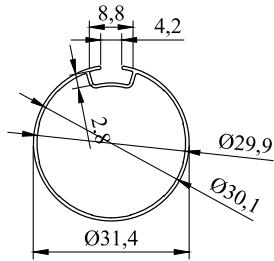
10 **BP043-03**
Plastic Tape
9 mm



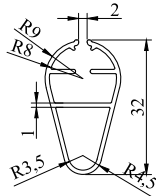
11 **BP020**
Chain

SYSTEM 470-Z

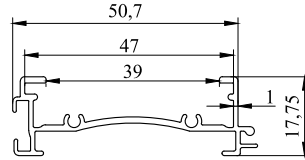
TECHNICAL DETAILS



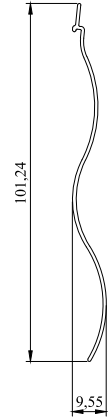
BP041-03



BP535



BP076-04



BP190

ALTERNATIVES



BP270-01

Chain Weight

option available



BP187

Joint Leg for Dual System

option available