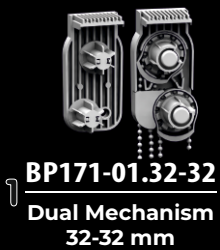
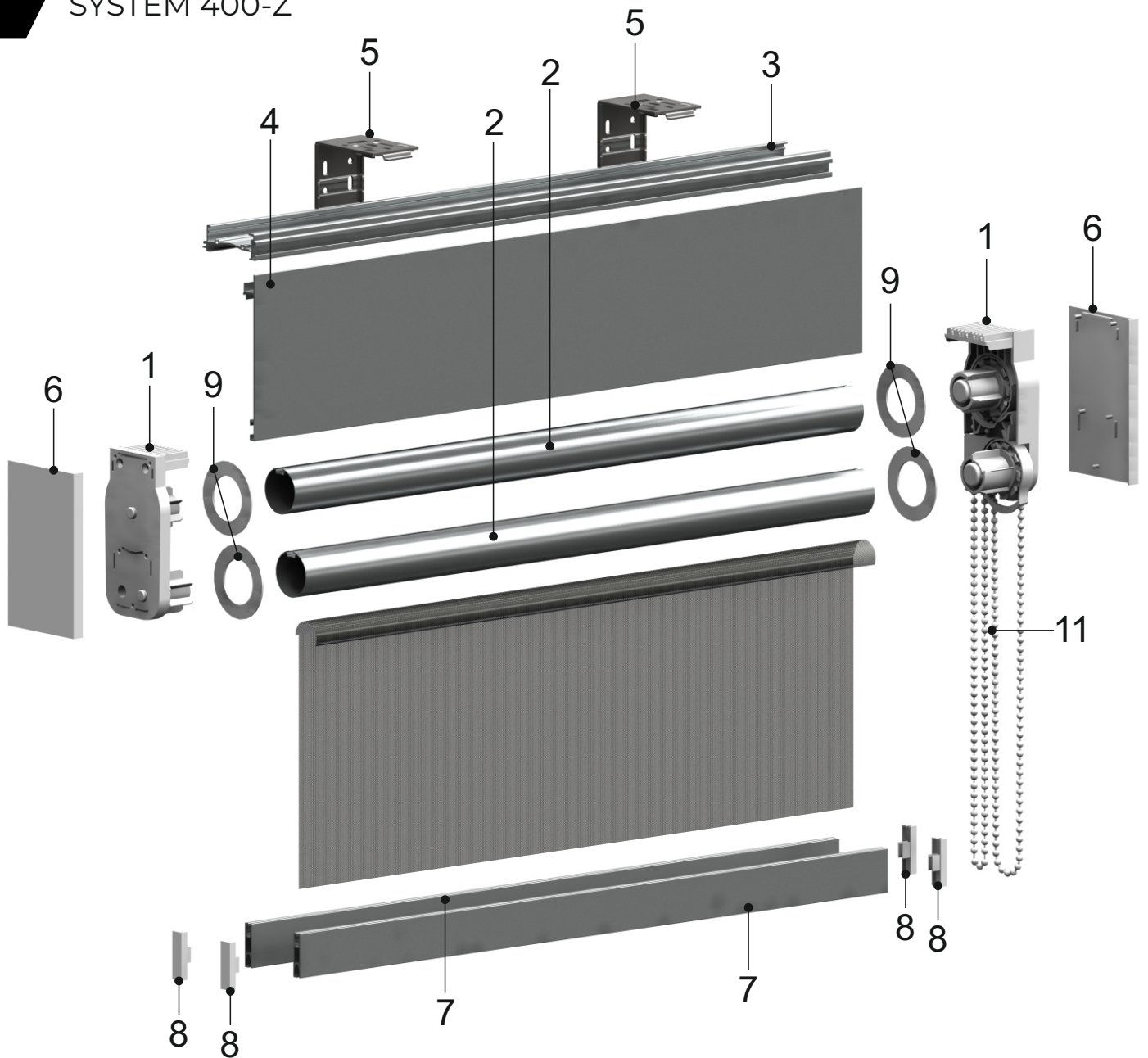
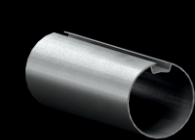


# DOUBLE SYSTEMS

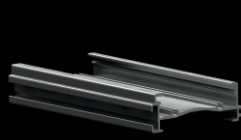
## SYSTEM 400-Z



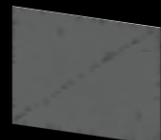
**1** **BP171-01.32-32**  
Dual Mechanism  
32-32 mm



**2** **BP041-03**  
Aluminium  
Tube 32 mm



**3** **BP076-04**  
Aluminium  
Headrail  
47 mm



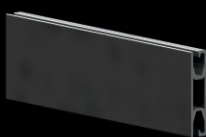
**4** **BP526**  
Aluminium  
Facia for  
Headrail



**5** **BP389**  
Wall Bracket  
with Spring



**6** **BP525**  
Dual Roller  
End Cap



**7** **BP533**  
Aluminium  
Bottom Rail



**8** **BP532**  
End cap for  
Bottom Rail



**9** **BP528**  
Fabric Guide  
50x30,5 mm



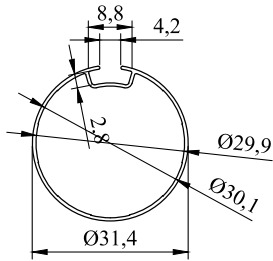
**10** **BP043-03**  
Plastic Tape  
9 mm



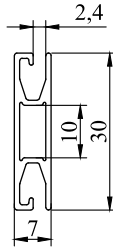
**11** **BP020**  
Chain

# SYSTEM 400-Z

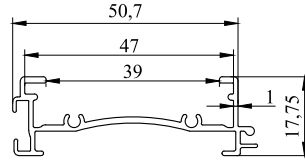
## TECHNICAL DETAILS



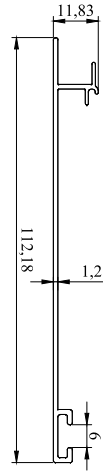
**BP041-03**



**BP533**



**BP076-04**



**BP526**

## ALTERNATIVES



**BP270-01**

Chain Weight

option available



**BP187**

Joint Leg for Dual System

option available