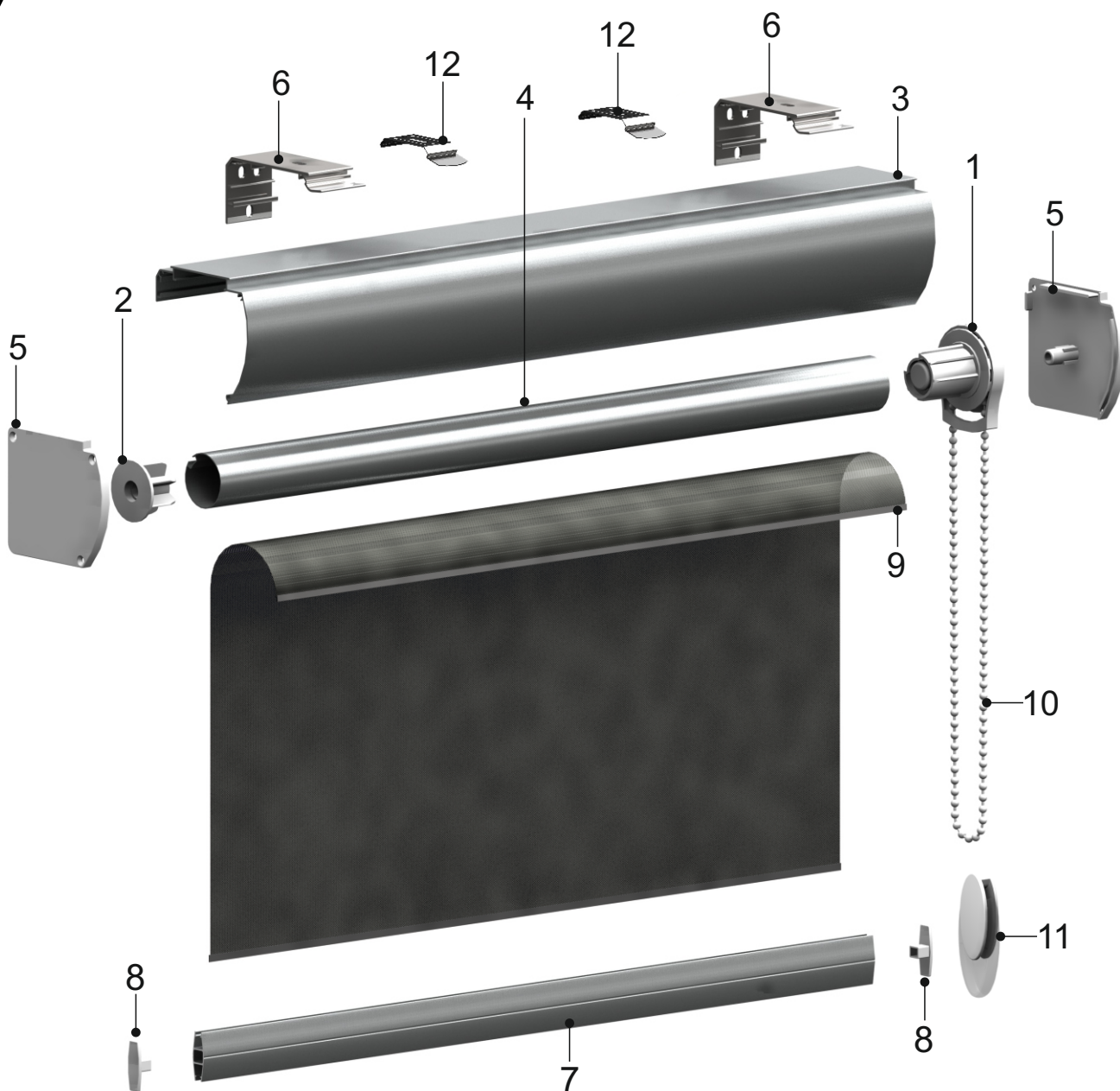


CLOSED TYPE SYSTEMS

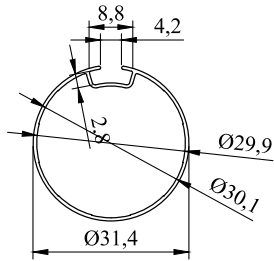
SYSTEM 133



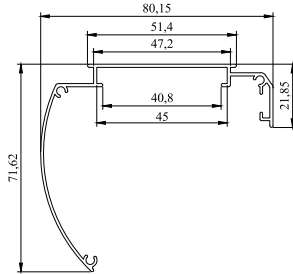
- | | | | | | |
|---|---|---|--|---|---|
|  |  |  |  |  |  |
| 1
BP050
Mechanism
32 mm | 2
BP107-04
End Plug
32 mm | 3
BP103
Aluminium
Cassette | 4
BP041-03
Aluminium
Tube 32 mm | 5
BP107
End Cap
(L/R) | 6
BP104-01
Aluminium
L Shape
Bracket |
|  |  |  |  |  |  |
| 7
BP042
Aluminium
Bottom Rail | 8
BP030
End cap for
Bottom Rail | 9
BP043-03
Plastic Tape
9 mm | 10
BP020
Chain | 11
BP270-01
Chain Weight | 12
BP104-02
Steel
Installation
Bracket |

SYSTEM 133

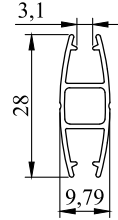
TECHNICAL DETAILS



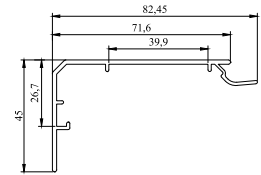
BP041-03



BP103



BP042



BP104-01

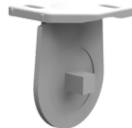
ALTERNATIVES



BP104-02

Steel End cap for Aluminium
Cassette (Bp103) (L/R)

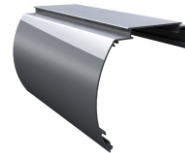
option available



BP053-01

Plastic Joint Leg with
Bearing

option available



BP113

Aluminium Cassette

option available

