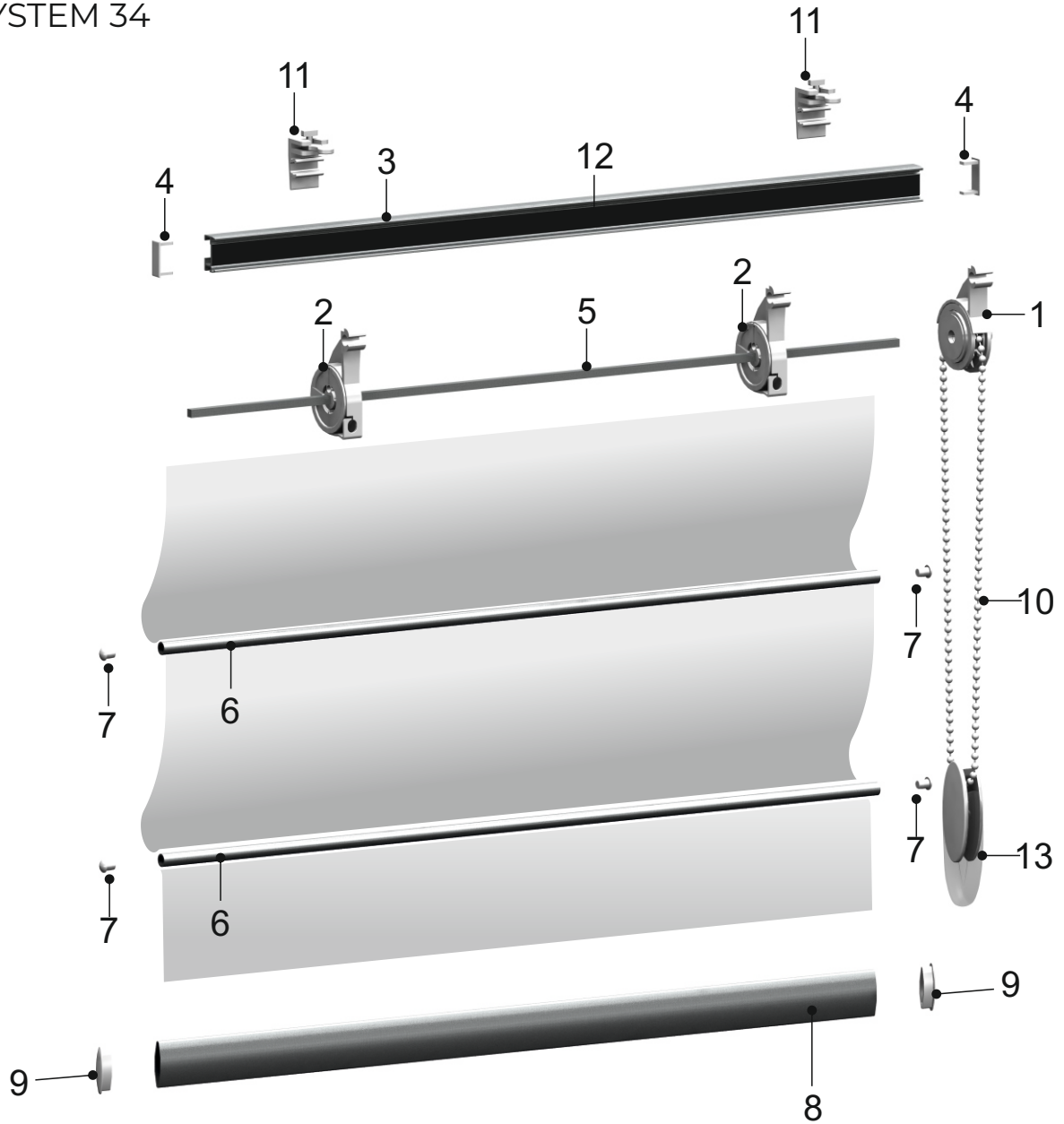


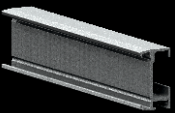




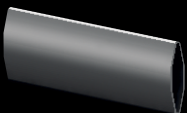







ROMAN BLIND SYSTEM

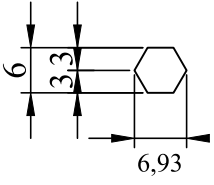
SYSTEM 34



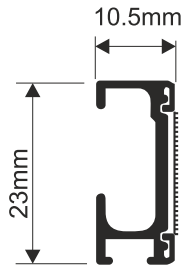
- | | | | | | | |
|---|---|---|---|---|---|---|
|  |  |  |  |  |  | |
| 1 BP024-02
Mechanism
- Square | 2 BP025-02
Cord Pulley
- Square | 3 BP073
Aluminium
Profile with
velcro | 4 BP046
End cap for
Profile | 5 BP070
Aluminium
Square Rod | 6 BP036
Aluminium
Tube | |
|  |  |  |  |  |  |  |
| 7 BP010
End cap for
Tube | 8 BP037
Roman Blind
Bottom Rail | 9 BP011
End cap for
Bottom Rail | 10 BP020
Chain | 11 BP324
Plastic
Installation
Bracket | 12 BP038
Velcros
Band | 13 BP270-01
Chain Weight |

SYSTEM 34

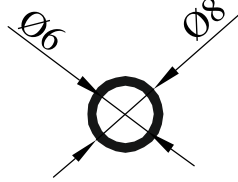
TECHNICAL DETAILS



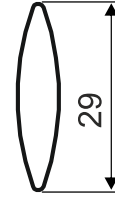
BP034



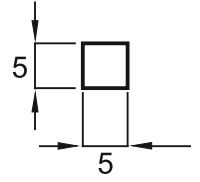
BP073



BP036



BP037



BP070

ALTERNATIVES



BP034

Aluminium Hexagon Rod
option available



BP1410

Installation Bracket
option available