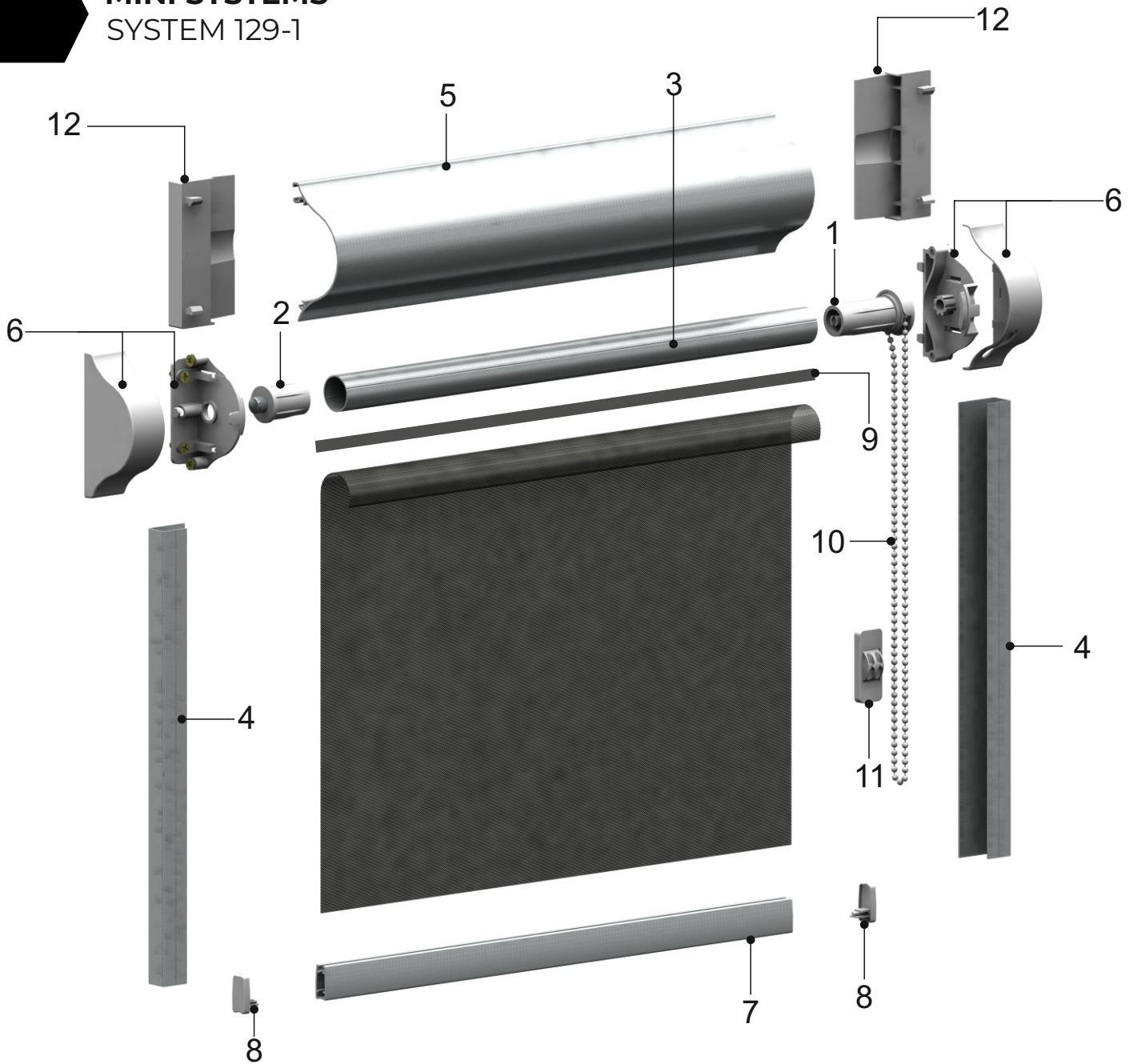


MINI SYSTEMS

SYSTEM 129-1



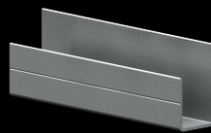
1 **BP245**
Mechanism
16 mm
for 3 mm Chain



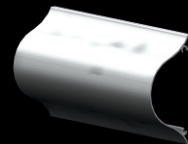
2 **BP215**
End Plug for
Ø16 mm Tube



3 **BP041-09**
Aluminium
Tube Ø16



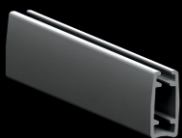
4 **BP333**
Aluminium
Side Guide
Profile



5 **BP498**
Aluminium
Facia for
Mini



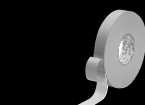
6 **BP499.M**
End Cap for
BP498



7 **BP234**
Aluminium
Bottom Rail



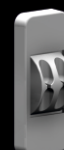
8 **BP237**
End cap for
Bottom Rail



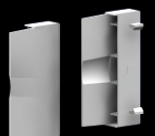
9 **BP043-01**
Plastic Tape
7 mm



10 **BP246**
3 mm
Chain



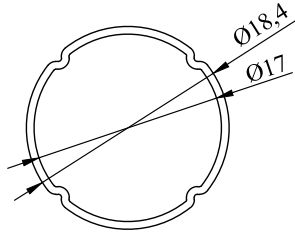
11 **BP315**
Stopper for
3 mm Chain



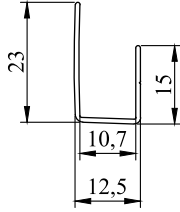
12 **BP497.M**
Lifting
Device

SYSTEM 129-1

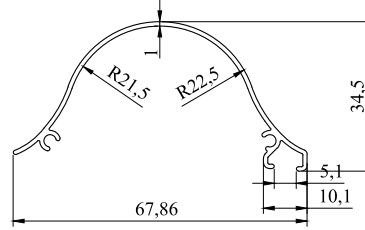
TECHNICAL DETAILS



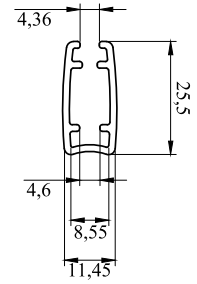
BP041-09



BP333



BP498



BP234

ALTERNATIVES



BP247

Connector for 3 mm Chain

option available