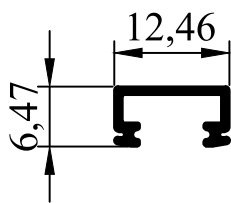
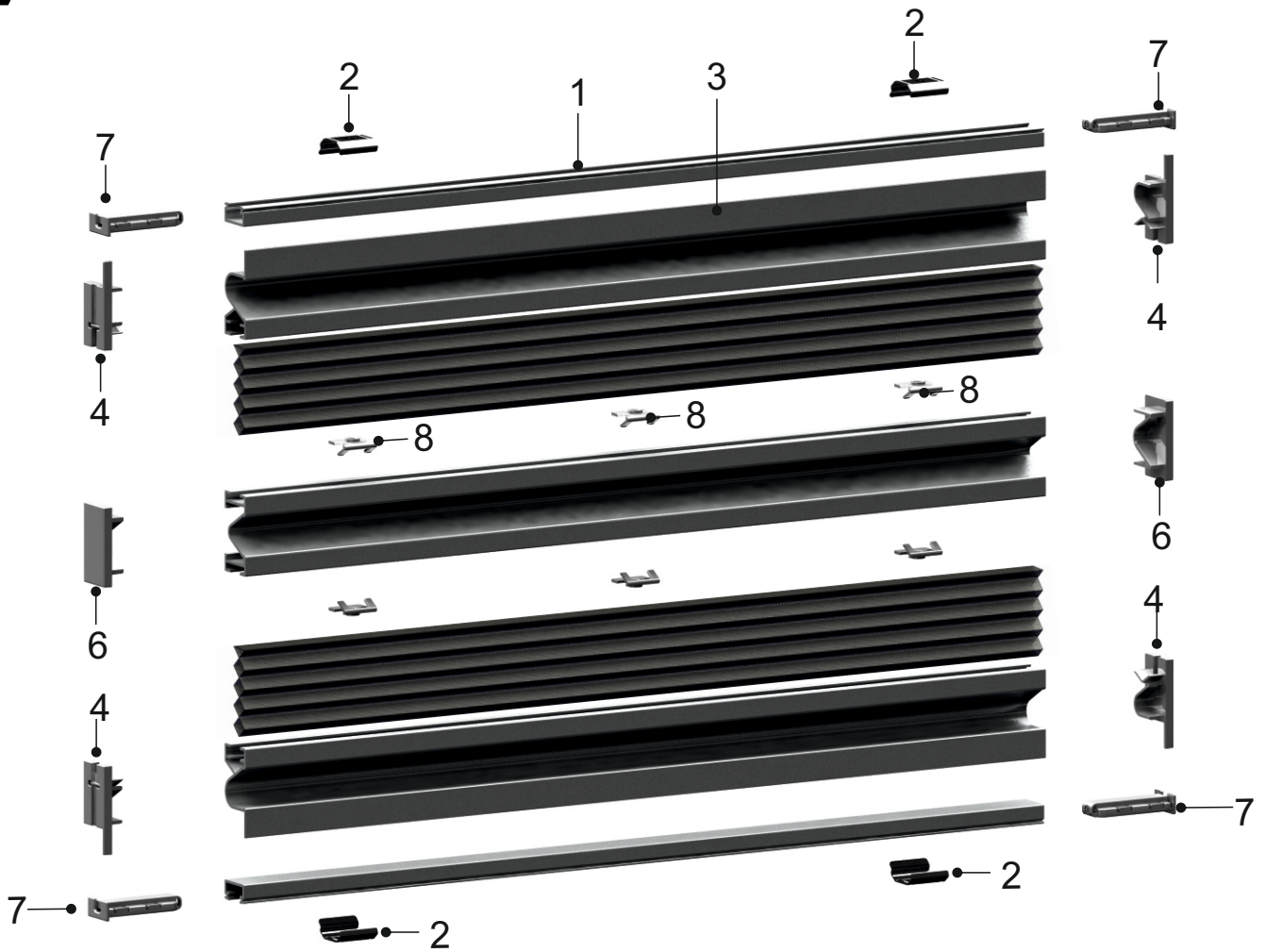
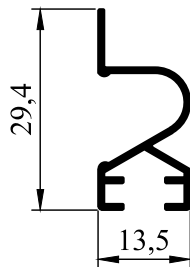


DOUBLE PLEATED & HONEYCOMB SYSTEM

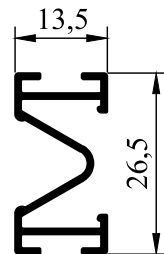
BRACKET INSTALLATION (15 MM)



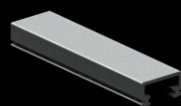
BP1168



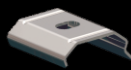
BP1268



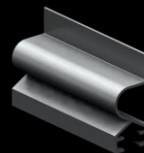
BP1270



1
BP1168
Pleat Profile
Assembly



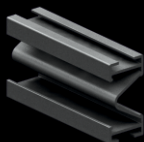
2
BP1170
Installation
Bracket (12,5 mm)



3
BP1268
Pleat Profile



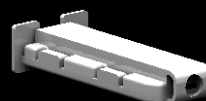
4
BP1269
End cap for
Al. Profile
(BP1268)



5
BP1270
Pleat Profile



6
BP1271
End cap for
Profile



7
BP1169
Cord Roller



8
BP1274
Pleat Eyelet