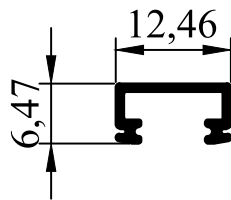
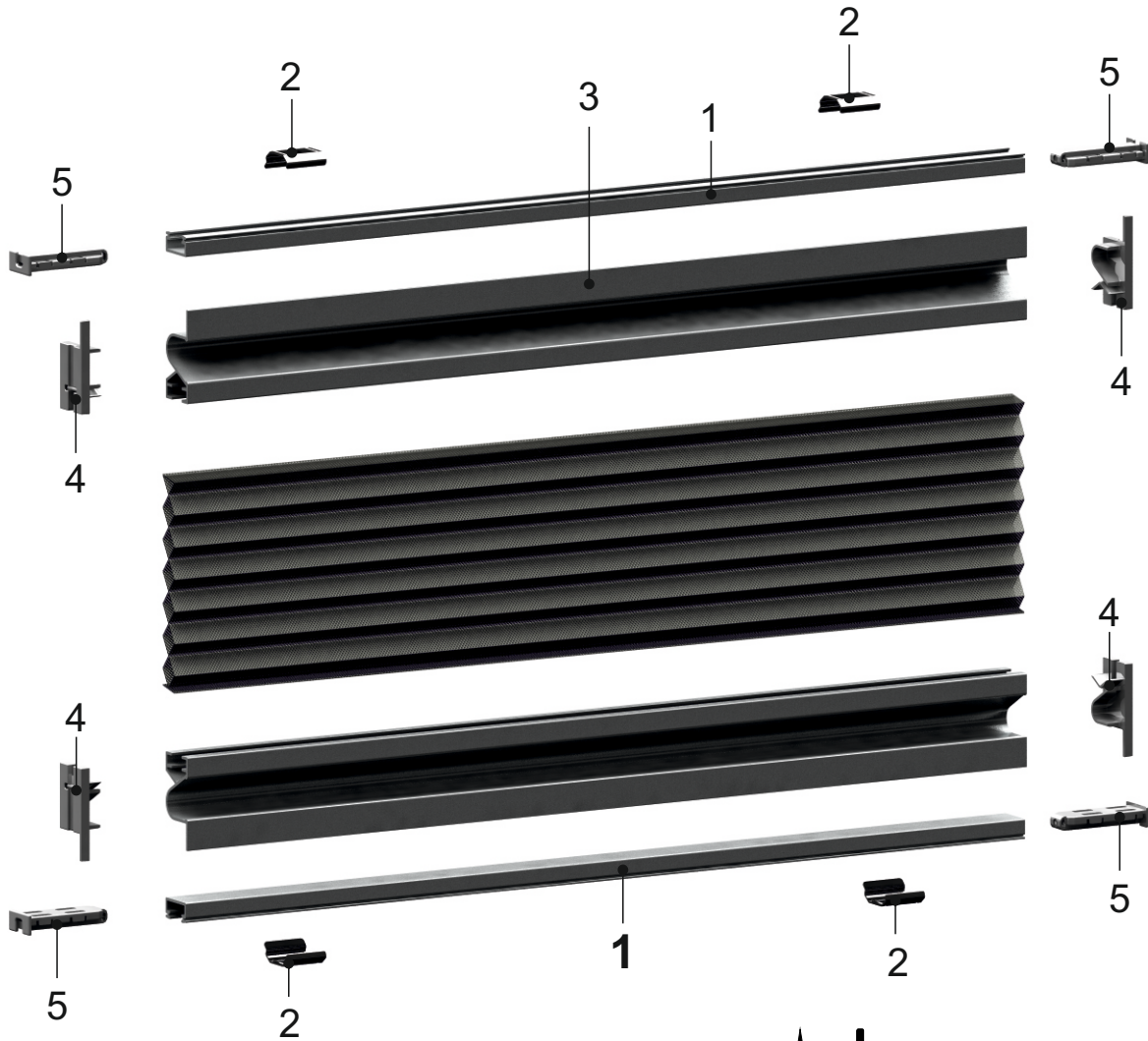
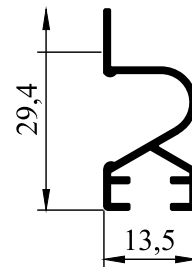


PLEATED & HONEYCOMB SYSTEM

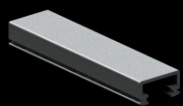
BRACKET INSTALLATION (15 MM)



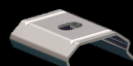
BP1168



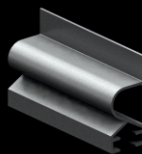
BP1268



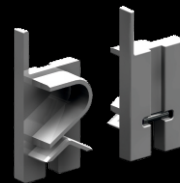
1 **BP1168**
Pleat Profile
Assembly



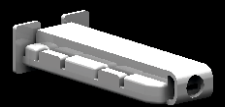
2 **BP1170**
Installation
Bracket
(12,5 mm)



3 **BP1268**
Pleat
Profile



4 **BP1269**
End cap for
Al. Profile
(BP1268)



5 **BP1169**
Cord Roller