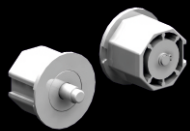
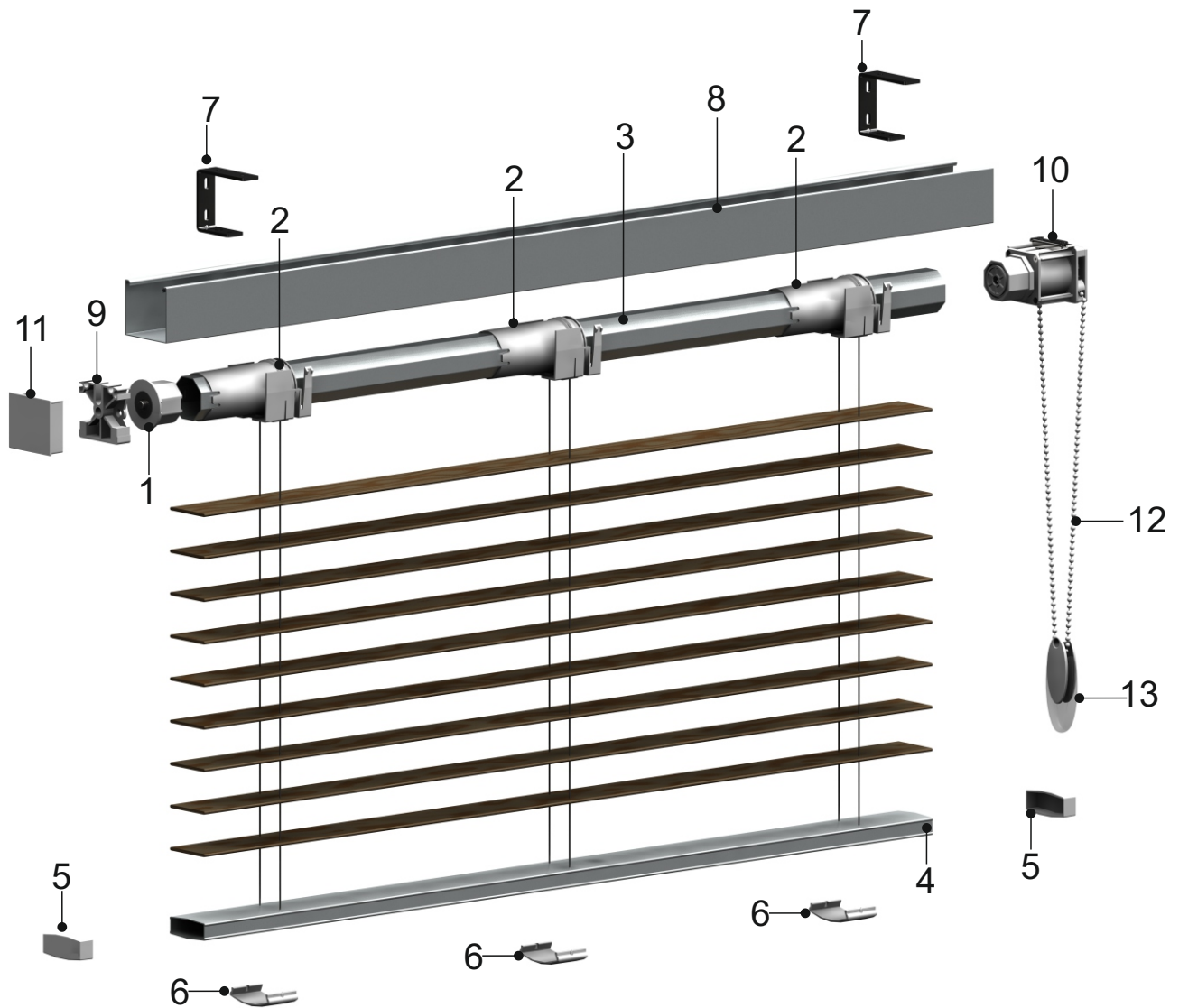
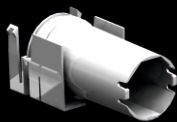


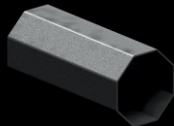
VENETIAN BLINDS SYSTEM BALANCED



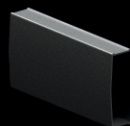
1 BP487
End Plug for
Octagon Profile
(BP484 - BP495)



2 BP488
Tape /
Cord Puller



3 BP495
Octagon
Aluminium Profile



4 BP587
Bottom Rail



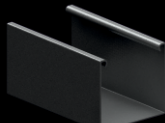
5 BP588
End cap for
Bottom Rail



6 BP822
Tape /
Cord Fixer
(BP587)



7 BP1028
U Shape
Installation Bracket
(BP1029 - BP1030)



8 BP1029
Headrail



9 BP1251
Rounded
Motor
Adopter



10 BP1258
Square Clutch
for Octagon
Tube



11 BP1263
End cap for
Headrail



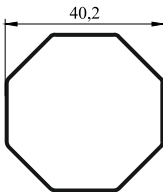
12 BP020
Chain



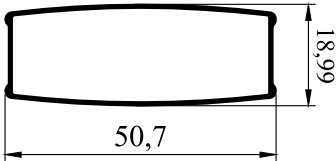
13 BP270-01
Chain Weight

VENETIAN - BALANCED SYSTEM

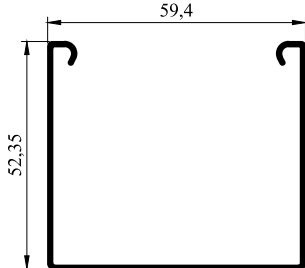
TECHNICAL DETAILS



BP495



BP587



BP1029